

www.jcmglobal.com

For updates on JCM Global products, services, and events, follow JCM Global on Facebook®, LinkedIn®, Twitter™ and YouTube™



facebook.com/JCMglobal

twitter.com/jcmglobal

linkedin.com/company/jcm-global

youtube.com/jcmglobal

Parts are Parts

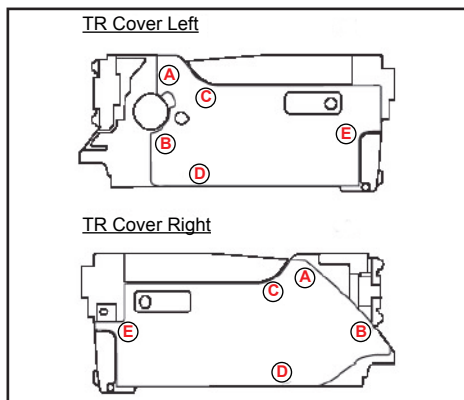


Figure 1 UBA Transport Side Covers (P/N 900-100767R/900-100519R)

Part No. 900-100767R (Left Transport Cover)/
900-100519R (Right Transport Cover)

Description: UBA Transport Side Covers

Usage: If the UBA Transport Side Covers (Figure 1) are improperly removed, the covers' catch points may be damaged, preventing them from mounting securely to the UBA Transport. To remove the Side Covers:

1. Open the Top and Front (blue) Covers (not shown).
2. Slightly lift and hold at points labeled **A** and **B**.
3. Move the cover toward the front of the UBA Unit.

To install covers, place each cover in the proper position.

1. Hold down at points labeled **C**, **D** and **E**.
2. Push the cover toward the rear of the UBA Unit.

Note: See instructions on each cover. Reinstall covers after service to protect the Harness and prevent damage to the gears.

Latest JCM Software Listing

UNIT	Country	ID	Version	Check Sum	CRC
UBA-10/11-SS	USA	ID-003	V-2.78-51	D6F5	0653
UBA-10/11-SS	USA	ID-024	V-2.78-24	9478	0C33
UBA-14/24-SS/SU	USA	ID-003	V-2.78-39	C51D	9914
UBA-14/24-SS/SU	USA	ID-0G8	V-2.78-73	6E61	AE34
UBA-14/24-SS/SU	USA	ID-024	V-2.78-36	5CC9	9374
UBA-14/24-SS/SU	USA	ID-028	V-2.78-25	91A6	8F70
iPRO-101	USA	ID-003	V-2.30-25	3112	6B08
iPRO-101	USA	ID-024	V-2.00-10	7CC4	0462
iPRO-101	USA	ID-028	V-1.77-04		2717
iPRO-101	USA	ID-0G8	V-2.20-07	F257	8343
iPRO-101	USA	ID-008	V-1.82-02	0584	48E8
iVIZION-100 SS/SU	USA	ID-003	V-2.53-38	DB41	44F9
iVIZION-100 SS/SU	USA	ID-008	V-2.56-20	3B11	1534
iVIZION-100 SS/SU	USA	ID-024	V-2.53-15	F6E4	21DD
iVIZION-100 SS/SU	USA	ID-028	V-2.53-30	6F1A	1FD5
iVIZION-100 SS/SU	USA	ID-0G8	V-2.66-32	1366	7736
UBA-10/11-SS	CAN	ID-003	V-2.80-52	14BD	3173
UBA-10/11-SS	CAN	ID-024	V-2.80-25	6A81	0231
UBA-14/24-SS/SU	CAN	ID-003	V-2.80-40	17E2	6B08
UBA-14/24-SS/SU	CAN	ID-024	V-2.80-37	BA95	421D
UBA-14/24-SS/SU	CAN	ID-028	V-2.80-25	F855	AC90
UBA-14/24-SS/SU	CAN	ID-0G8	V-2.80-74	C4C6	CF99
iPRO-100	CAN	ID-003	V2.31-26	F3F1	54EC
iPRO-100	CAN	ID-008	V1.82-02	8572	0CA6
iPRO-100	CAN	ID-024	V-2.31-12	7D39	1C91
iPRO-100	CAN	ID-028	V-2.31-06	D789	0653
iVIZION-100 SS/SU	CAN	ID-003	V-2.72-40	B5C4	6451
iVIZION-100 SS/SU	CAN	ID-024	V-2.72-15	FF21	EE81
iVIZION-100 SS/SU	CAN	ID-028	V-2.72-30	D668	7F97
iVIZION-100 SS/SU	CAN	ID-0G8	V-2.51-29	06B5	7DD8

The Latest JCM Software Listing (shown above) identifies specific software versions that have been released to OEMs. It is the responsibility of the OEM to obtain all required approvals from Gaming Regulators and Jurisdictional Authorities necessary for use of approved software versions. Contact the Game Manufacturer (OEM) for information on specific software releases approved for use within your gaming jurisdiction.

JCM recommends using the latest version for maximum acceptance, security, and performance.

JCM Service Offerings

JCM offers the following services to help keep your JCM Products performing within factory specifications:

Warranty and Non-Warranty Service and Repair

Preventive Maintenance Programs

Custom Training Classes

ICB Data Analysis

Unit Exchange Programs

Validator Performance Analysis

JCMedia™ Is The Source For All Your Video Needs!

JCMedia™ solutions incorporate the latest digital display technology (single screen to large scale video wall solutions), digital content creation services and networked solutions for all your media needs. JCMedia now offers the only upgradeable pixel pitch LED Displays using JCM's PIXELPRO™ Display Technology. PIXELPRO products combine unsurpassed color uniformity and the best pixel-to-pixel resolution available in the Gaming industry in an easy-to-install package. PIXELPRO MAX™ provides a high-resolution interlocking panel solution for large scale LED Video screens. PIXELPRO FLEX™ offers flexible panels for curved surface implementations, and PIXELPRO CUBE™ supports 3-D Video Displays. For more information, please visit the JCM Global website at jcmmedia.jcmglobal.com!





FREE JCM TRAINING AVAILABLE 24/7

Technicians need training, but time or class availability is a problem? JCM Online Training offers classes to meet your schedule and your needs. JCM Online Training Programs feature the same content as JCM On-site Training with the added convenience of flexible scheduling. Visit training.jcmglobal.com for more information or to register for classes.

Technical Bulletin 201704 April 2017

Technical Tips

Question: Which applications are available for testing and downloading JCM Validators and Printers?

Answer: Several applications are available for downloading, calibration and testing of JCM products. All applications are available at www.jcmglobal.com in the Software Tools section, including the following examples.

JCM Tool Suite, Version 1.38 (**Figure 2**) provides downloading, calibration and performance testing functions for most Validators.

JCM Printer Basic Driver version 1.05 provides functional testing for JCM GEN Printers.

FLDFU Downloader, Version 2.2.8a is the Firmware Download application for GEN2U and GEN5 Printers.

ID003 Basic Driver, Version 2.01 allows Validator functionality and communications testing using a PC.

ID024 Basic Driver, Version 2.01 allows Validator functionality and communications testing of Validators with ID-024 Firmware installed.

For additional information on JCM Products, visit the JCM Global website at www.jcmglobal.com, or contact your local JCM Sales Representative at (800) 683-7248.

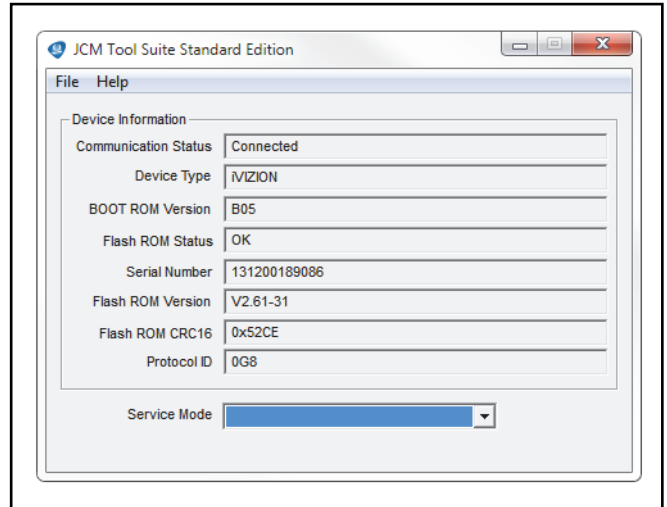


Figure 2: JCM Tool Suite™ Standard Edition Main Screen

Current Service Manual Releases

Product	Rev.	Product	Rev.
DBV-30X	4	iVIZION	6
DBV-500 Operations Manual	1	Taiko (PUB-7/11)	6
DBV-400 Operations Manual	1	TBV	2
DT-200 BlueWave 2	7	TBV-101-ASH	A
EBA-40	2	UBA-10/11/14/24/25	3b
ICB Service Manual	4	UBA-RC	2
ICB 3.0 Web Reports Ops Manual	A	VEGA	4
iPRO	1	VEGA-RC	3
iPRO-RC	2	FLDFU Download Manual	3
RC-10 Service Manual	1	FL Operator & Technician's Manual	3
JCM Tool Suite	4	GEN5™ Operations Manual	A

To access JCM Product Manuals, please visit: www.jcmglobal.com

JCM TECHNICAL SUPPORT CONTACTS		
Headquarters (Japan)		
Sales and Service	+81-3-5962-3731	hq-jp@jcmglobal.com
Europe, Middle East, Africa, Russia		
Sales	+49-211-530645-50	hq-eu@jcmglobal.com
Service	+49-211-530645-60	
Australia, Oceania		
Sales and Service	+612 96 48 0811	australia@jcmglobal.com
Southeast Asia		
Sales and Service	+853 28 72 2684	asiasupport@jcmglobal.com
North/South America/Canada/Caribbean		
Toll Free Product Support	(800) 683-7248 or (702) 651-0000	support@jcmglobal.com
After Hours Americas Support		
<p>JCM American prides itself in offering the best Customer Service in the industry. We offer a 24 hour After Hours Hotline, where Technical Support Personnel can be reached at any time, 7 days a week. To reach our 24/7 After Hours Hotline:</p> <ol style="list-style-type: none"> 1.) Call JCM American at (800) 683-7248. 2.) Select "Option 1" and wait for the call to be transferred to the JCM after hours Technical Support line. 3.) Speak with a certified JCM Support Technician about your situation. 		

JCM Global is a registered trademark of JCM American Corporation. All other product names mentioned herein may be registered trademarks or trademarks of their respective companies. Furthermore, TM and ® are not mentioned in each case in this publication.