

www.jcmglobal.com

For updates on JCM Global products, services, and events, follow JCM Global on Facebook®, LinkedIn®, Twitter™ and YouTube™



facebook.com/JCMglobal

twitter.com/jcmglobal

linkedin.com/company/jcm-global

youtube.com/jcmglobal

Parts are Parts



Figure 1 BlueWave™DX Tool

Part No. 214780

Description: BlueWave™DX Tool

Usage: The BlueWaveDX Tool (**Figure 1**) is a portable battery-powered handheld unit used to support JCM Validators, Banknote Acceptors, Printers and Peripheral Network Adapters equipped with USB Ports for updating firmware (listed below) with functions such as:

- Firmware Downloads and Updates
- Recovering Statistics
- Checking Acceptance Rates
- Setting ICB Functions (iVIZION® Units)
- Performing a Device Test (iVIZION Units).

Note: BlueWaveDX Tool is compatible with iVIZION, iPRO™, iPRO-RC™, UBA®, TBV™, VEGA™, VEGA-RC™, EBA®-40, DBV®-500, DBV®-400, GEN5™, GEN2U™ and PNA™ Units.

Latest JCM Software Listing

UNIT	Country	ID	Version	Check Sum	CRC
UBA-10/11-SS	USA	ID-003	V-2.82-52	4BDC	6359
UBA-10/11-SS	USA	ID-024	V-2.82-25	3BF2	6D5B
UBA-14/24-SS/SU	USA	ID-003	V-2.82-40	0E53	2F46
UBA-14/24-SS/SU	USA	ID-0G8	V-2.82-74	F823	AE34
UBA-14/24-SS/SU	USA	ID-024	V-2.82-37	FED2	F6EB
UBA-14/24-SS/SU	USA	ID-028	V-2.82-25	190A	0653
iVIZION-100 SS/SU	USA	ID-003	V-2.80-42	02A1	964D
iVIZION-100 SS/SU	USA	ID-008	V-2.83-22	7DEB	39B4
iVIZION-100 SS/SU	USA	ID-024	V-2.80-15	AA27	271B
iVIZION-100 SS/SU	USA	ID-028	V-2.80-30	1021	E2E1
iVIZION-100 SS/SU	USA	ID-0G8	V-2.80-38	1905	C088
UBA-10/11-SS	CAN	ID-003	V-2.82-52	B445	56DD
UBA-10/11-SS	CAN	ID-024	V-2.82-25	8FC3	D9AD
UBA-14/24-SS/SU	CAN	ID-003	V-2.82-40	CEF6	5E8C
UBA-14/24-SS/SU	CAN	ID-024	V-2.82-37	C66F	E2BE
UBA-14/24-SS/SU	CAN	ID-028	V-2.82-25	FD47	E01A
UBA-14/24-SS/SU	CAN	ID-0G8	V-2.82-74	F0D0	9716
iVIZION-100 SS/SU	CAN	ID-003	V-2.82-44	5B45	208A
iVIZION-100 SS/SU	CAN	ID-024	V-2.82-15	C6B6	8D4D
iVIZION-100 SS/SU	CAN	ID-028	V-2.82-30	C8BB	0AAA
iVIZION-100 SS/SU	CAN	ID-0G8	V-2.82-38	5784	92A2

The Latest JCM Software Listing (shown above) identifies specific software versions that have been released to OEMs. **It is the responsibility of the OEM to obtain all required approvals from Gaming Regulators and Jurisdictional Authorities necessary for use of approved software versions.** Contact the Game Manufacturer (OEM) for information on specific software releases approved for use within your gaming jurisdiction.

JCM recommends using the latest version for maximum acceptance, security, and performance.

JCM Service Offerings

JCM offers the following services to help keep your JCM Products performing within factory specifications:

- **Warranty and Non-Warranty Service and Repair**
- **Preventive Maintenance Programs**
- **Custom Training Classes**
- **ICB Data Analysis**
- **Unit Exchange Programs**
- **Validator Performance Analysis**

JCM Global® Is The Source For All Your Video Needs!

JCM Global incorporates the latest digital display technology (single screen to large scale video wall solutions), digital content creation services and networked solutions for all your media needs. JCM Global products combine unsurpassed color uniformity and the best pixel-to-pixel resolution available in the Gaming industry in an easy-to-install package. JCM Global MAX-S provides a high-resolution interlocking panel solution for large scale LED Video screens. JCM Global FLEX offers articulating panels for curved surface implementations. JCM Global CUBE supports 3-D Video Displays and JCM Global ELEMENTS supports outdoor installations. For details, visit the JCM Global website at www.jcmglobal.com!





FREE ONLINE TRAINING

Technicians need training, but is time or class availability a problem? JCM Online Training offers classes to meet your schedule and your needs. JCM Online Training Programs feature the same content as JCM On-site Training with the added convenience of flexible scheduling. Visit training.jcmglobal.com for more information or to register for classes.

Technical Bulletin 201903 March 2019

Technical Tip

Question: Which applications are available for testing the iVIZION® and UBA® Banknote Acceptors?

Answer: Two applications can be downloaded from the JCM Global website at www.jcmglobal.com:

Application	Acceptors
ID-003 (Ver 2.0.1)	UBA® -1x and 2x iVIZION®
ID-024 Basic Driver (Ver 2.0.0)	UBA® -1x and 2x iVIZION®

Both the ID-003 Basic Driver (Version 2.0.1) (Figure 2) and ID-024 Basic Driver (Version 2.0.0) support full testing of the iVIZION, UBA and other JCM Banknote Acceptors. The Basic Drivers provide the communications between the Banknote Acceptor and a Personal Computer or Laptop. The status of communications is displayed while the Banknote Acceptor is performing acceptance of a Banknote.

For additional information on JCM Products, visit the JCM Global website at www.jcmglobal.com, or contact your local JCM Sales Representative at (800) 683-7248.

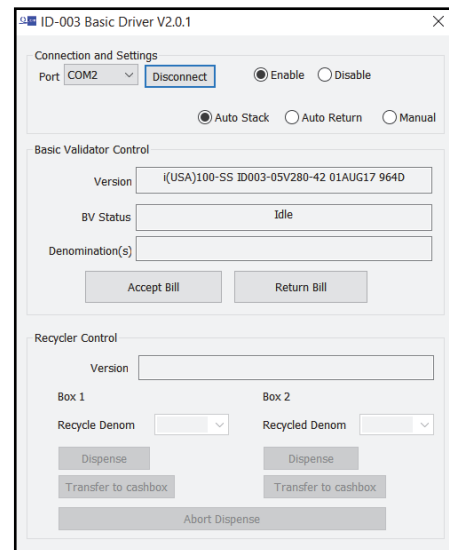


Figure 2: ID-003 Basic Driver V2.0.1 User Interface

Current Service Manual Releases

Product	Rev.	Product	Rev.
DBV-30X	4	iVIZION	7
DBV-500 Operations Manual	1	Taiko (PUB-7/11)	6
DBV-400 Operations Manual	1	TBV	3
DT-200 BlueWave 2	7	TBV-101-ASH	A
EBA-40	2	UBA-10/11/14/24/25	3b
ICB Service Manual	4	UBA-RC	3
ICB 3.0 Web Reports Ops Manual	3	VEGA	4
iPRO	2	VEGA-RC	3
iPRO-RC	3	FL Operator & Technician's Manual	3
RC-10 Service Manual	1	GEN5 Operations Manual	2
JCM Tool Suite	4	BlueWaveDX Tool (DT-300)	1

To access JCM Product Manuals, please visit: www.jcmglobal.com



JCM TECHNICAL SUPPORT CONTACTS

Headquarters (Japan)

Sales and Service +81-3-5962-3731 hq-jp@jcmglobal.com

Europe, Middle East, Africa, Russia

Sales +49-211-530645-50
Service +49-211-530645-60 support@jcmglobal.eu

Australia, Oceania

Sales and Service +612 96 48 0811 australia@jcmglobal.com

Southeast Asia

Sales and Service +853 28 72 2684 asiasupport@jcmglobal.com

North/South America/Canada/Caribbean

Toll Free Product Support (800) 683-7248 or (702) 651-0000 support@jcmglobal.com

After Hours Americas Support

JCM American prides itself in offering the best Customer Service in the industry. We offer a 24 hour After Hours Hotline, where Technical Support Personnel can be reached at any time, 7 days a week. To reach our 24/7 After Hours Hotline:
1.) Call JCM American at (800) 683-7248.
2.) Select "Option 1" and wait for the call to be transferred to the JCM after hours Technical Support line.
3.) Speak with a certified JCM Support Technician about your situation.

JCM Global is a registered trademark of JCM American Corporation. All other product names mentioned herein may be registered trademarks or trademarks of their respective companies. Furthermore, TM and © are not mentioned in each case in this publication.