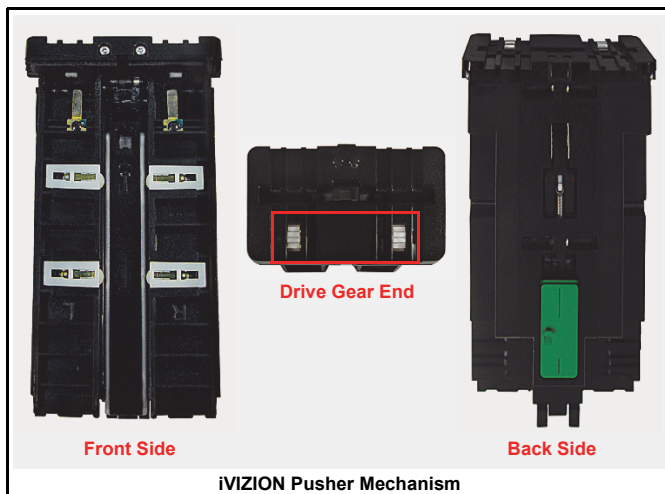


www.jcmglobal.com

The JCM Global Website provides the tools required to service all of our products. This includes a Software information database containing DIP Switch information, Customer Notifications, Product Manuals, Diagnostic Applications and more.

Parts are Parts



Part No. 197877

Description: iVIZION Pusher Mechanism Assembly

Usage: The Pusher Mechanism in the iVIZION Cash Box features stronger gears mounted flush to the surface and away from the edge to prevent damage. It also contains the manual Pusher Extension to allow viewing of the last Banknote inserted. The Transport Belt System is a serpentine design with fewer contact points on the Bank note to allow for a smoother transition into the Cash Box.

Note: The Stacker Mechanism utilizes a Cam System that allows the Stacker Motor to rotate in one direction only. This increases the stack cycle allowing the Acceptor to operate in less than 3 seconds note-to-note.

Latest JCM Software Listing

UNIT	Country	ID*	Version†	Check Sum	CRC
UBA-10/11-SS	USA	ID-003	V2.06-21	028E	
UBA-10/11-SS	USA	ID-024	V2.06-17	7E99	
UBA-14/24-SS/SU	USA	ID-003	V-2.06-21		7BAA
UBA-14/24-SS/SU	USA	ID-0G8*	V-2.06-66		F67E
UBA-14-SS & UBA-24-SS/SU	USA	ID-024	V2.06-28		EE8D
UBA-14-SS & UBA-24-SS/SU	USA	ID-028*	V2.06-18	AEC9	A6F0
UBA-25-SS/SU	USA	ID-024*	V2.05-28	2CB2	
UBA-25-SS/SU	USA	ID-028*	V2.06-18	05D6	
WBA-12/13-SS	USA	ID-003	V-3.80-32i†	0ABC	
WBA-12/13-SS	USA	ID-044*	V-3.75-05i†	D716	
WBA-12/13-SS	USA	ID-024*	V-3.80-34	D1F3	
UBA-10/11-SS	EUR	ID-003*	V-2.05-27	4AB9	
UBA-10/11-SS	SWE	ID-003*	V-2.05-20	A3E5	95B2
UBA-10/11-SS	ZAF	ID-003	V-2.05-20	E57F	2F46
UBA-10/11/12-SS	BWA	ID-003*	V-1.96-20	D605	3342
UBA-10/11/12-SS	BGR	ID-003*	V-2.05-20	DA20	21D1
UBA-10/11/12-SS	NAM	ID-003*	V-2.05-20	D12C	A4C1
UBA-10/11/12-SS	TUR	ID-003*	V-2.05-24	557D	C70D
UBA-10/11/12-SS	DNK	ID-003	V-2.07-24	84B2	
UBA-10/11/12-SS	DNK+EUR5	ID-003E*	V-2.07-24	C19A	A0A3
UBA-10/11/12-SS	BIH	ID-003*	V-2.05-20	88F1	D73A
UBA-14-SS & UBA-24-SS/SU	EUR5	ID-003*	V-1.95-20		2BB1
UBA-14-SS & UBA-24-SS/SU	ZAF	ID-003*	V-2.05-20	C3AC	0653
UBA-14-SS & UBA-24-SS/SU	GBR+SCO	ID-003*	V-2.06-21		6B08

* an asterisk signifies this ID# does not appear on the JCM Web Site.

† an "i" suffix indicates Intelligent Cash Box Option compatibility.

The list of JCM Banknote Validator Software provided herein notifies Customers of the latest Software Versions developed. However, the listing does not identify Versions approved by Gaming Jurisdictional Authorities for actual use. Customers should always consult the JCM's Parts Sales Departments concerning approved Versions for use in their specific jurisdictions intended for operation.

Current Service Manual Releases

Product	Revision	Product	Revision
DBV-30X	4	EBA-3X	4 *
EBA-03	2	UBA 10/11/14/24/25	3
ICB	3	WBA-1X2X	1
Tiako (PUB-7/11)	2	DT-200 BlueWave 2	2 *
TSP-02	D	iVIZION	2

* NOTE: Release updated this Month.

Save Time and Labor with JCM's Latest Intelligent Cash Box System

The ICB® (Intelligent Cash Box) system is a unique cash management system that allows the operator to track a Cash Box and its contents through the entire cash process. The ICB system eliminates the need for dedicating Cash Boxes to specific machines, or putting barcode identification labels on the Cash Boxes. The Cash Boxes are tracked electronically eliminating most variance issues, and with the custom reports provided to each department, accuracy and efficiency is greatly improved.





FREE REGIONAL TRAINING

Give your technicians the tools they need to keep your customers happy and your equipment running at peak efficiency.

For the local and regional training schedule visit:

<http://www.jcmglobal.com>

Technical Bulletin 201110 October 2011

Technical Tips

Question: What diagnostic options does the JCM Tool Suite Program provide?

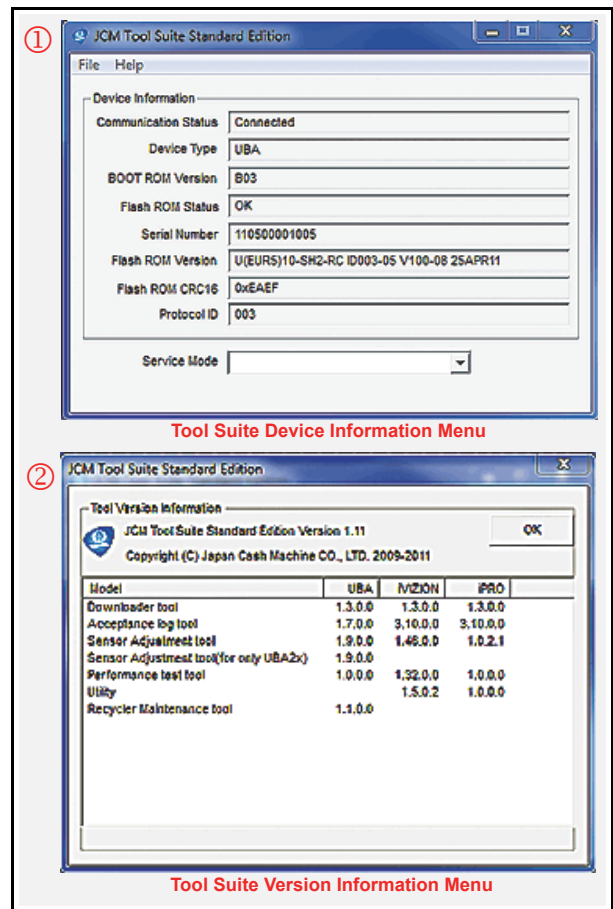
The JCM Tool Suite combines programs for Downloading Software, Sensor adjustment and Statistical data retrieval. The program automatically identifies the Validator's Model when it attached using the appropriate USB Harness ①. Because different Sensor Adjustment and Statistical Programs are used for each model; the appropriate programs are selected according to each Units' identification.

The ACCload statistics program allows a Technician to review the performance and acceptance characteristics of the Unit being read. This data is stored in the Validator's Memory and can be used to diagnose issues by reporting any error codes experienced, as-well-as displaying all recent acceptance data.



NOTE: All JCM Validator Diagnostic and Bench Test Programs are available in the Download Section of the JCM Global Website at: <http://www.jcmglobal.com/en/support/downloads/tools.aspx>.

Updates to existing programs are added regularly, so check often to insure the latest version exists for your particular Validator. The version information is listed under the help button ②. The JCM Tool Suite program has been recently updated with improvements in the Calibration portion of the programs for JCM UBA and IVISION Validators (e.g., Version 1.11).



JCM Tool Suite Menus



JCM TECHNICAL SUPPORT CONTACTS

Headquarters (Japan)

Sales and Service | 81-6-6703-8405 | hq-jp@jcmglobal.com

Europe, Africa, Russia, Middle East

Sales and Service | 49-211-530645-0 | hq-eu@jcmglobal.com

Australia, Oceania

Sales and Service | 61-2 9648 0811 | ipayne@jcmglobal.com

Southeast Asia

Sales and Service | 853 28 72 2648 | jim.teng@jcmglobal.com

North/South America/Canada/Caribbean

Toll Free Product Support | (800) 683-7248 or (702) 651-0000 | techsupport@jcmglobal.com

After Hours America's Support

JCM American prides itself in offering the best Customer Service in the industry. We prove this by offering a 24 hour hotline, where Technical Support Personnel can be reached at any time, 7 days a week. To reach our 24/7 after hour's hotline, just follow these three easy steps:
 1.) Call JCM American at (800) 683-7248. 2.) Select "Option 5" and wait for the call to be transferred to the JCM after hour's Technical Support line.
 3.) Speak with a certified JCM support technician about your situation.

JCM is a registered trademark of JCM American Corporation. All other product names mentioned herein may be registered trademarks or trademarks of their respective companies. Furthermore, TM and ® are not mentioned in each case in this publication.