

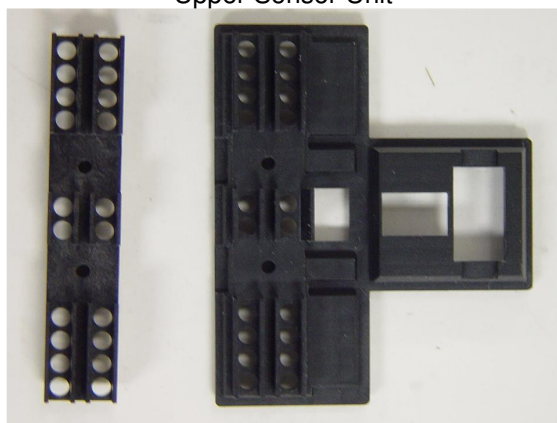


Notification No.:	20081117	Revision: 1.0	Page: 1 of 2
Release Date:	Nov 17, 2008		
Notification Status:	<input type="checkbox"/> Advisory	<input type="checkbox"/> Mandatory	<input checked="" type="checkbox"/> Announcement
Classification:	<input type="checkbox"/> Firmware	<input checked="" type="checkbox"/> Hardware	<input type="checkbox"/> Policy/Procedure
Description:	UBA Dust Protection Kit		
Hardware:	UBA all models		
Interface:	n/a	Check Sum:	n/a
Firmware Version(s):	n/a	CRC (seed = 0000):	n/a

Conditions:
 In an ongoing effort to improve product performance in extreme environmental conditions, JCM Engineering has developed a retrofit kit to be used on units that are operating in smoke and dust filled environments.

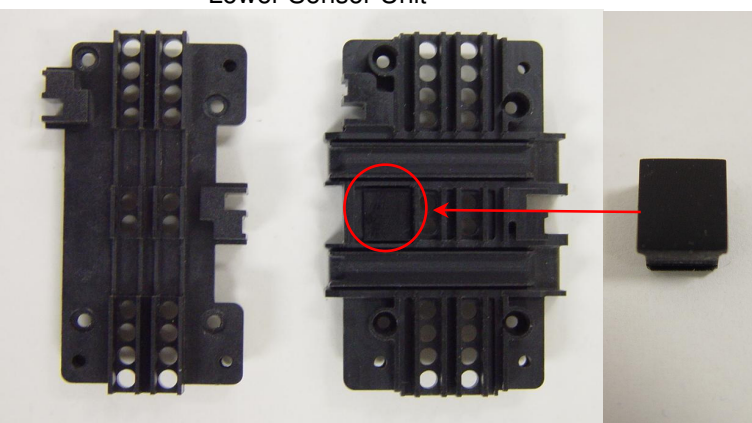
Resolution:
 This retrofit (Kit, Dust Protection P/N 701-100083RA) has new covers placed over the upper (Refer to Figure 1) and lower (Refer to Figure 2) sensor area to prevent potential buildup inside the sensor lens area. The Bar Cap is removed for installation on UBA 24 Models.

Upper Sensor Unit



Old New

Lower Sensor Unit



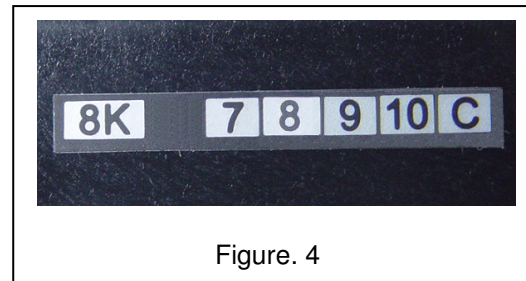
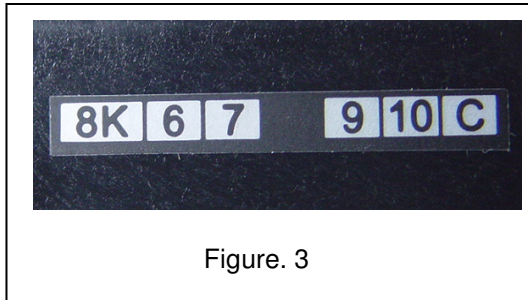
Old New Bar Cap

Figure 1. Figure 2



Notification No.:	20081117	Revision: 1.0	Page: 2 of 2
Release Date:	Nov 17, 2008		
Notification Status:	<input type="checkbox"/> Advisory	<input type="checkbox"/> Mandatory	<input checked="" type="checkbox"/> Announcement
Classification:	<input type="checkbox"/> Firmware	<input checked="" type="checkbox"/> Hardware	<input type="checkbox"/> Policy/Procedure
Description:	UBA Dust Protection Kit		
Hardware:	UBA all models		
Interface:	n/a	Check Sum:	n/a
Firmware Version(s):	n/a	CRC (seed = 0000):	n/a

The kit will become standard on production UBA units as of September, 2008. The modified production unit will be readily identified by the seal on the rear of the transport next to the connector. For UBA 10/ 11/ 12/ & 14, the number 8 will be blacked out. (Refer to Figure 3) For UBA 24 the number 6 will be blacked out.(Refer to Figure 4)



Notes:

The intent of this announcement is to accurately reflect information available at the time of this writing. This information can change or be modified at any time with no formal notification requirements. Please contact your local JCM Sales Representative or JCM Customer Service at (800) 683-7248 for additional information.